



STAINED WOOD OPTIONAL
 ILLUSTRATIVE PURPOSES ONLY

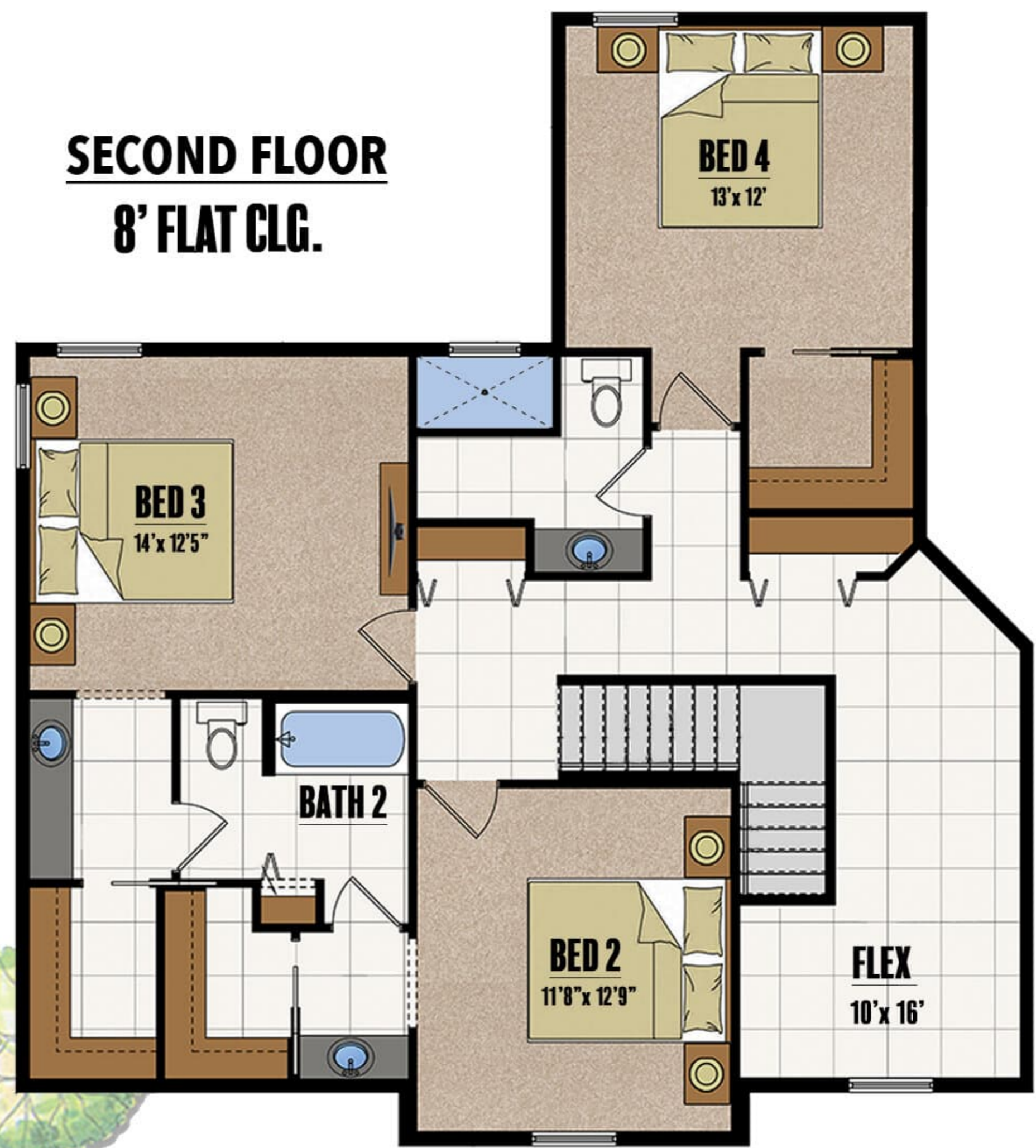
FIRST FLOOR
 9'-3" FLAT CLG.



CASCADe

Living 1	1872
Living 2	1178
Garage	471
Lanai	363
Entry	86
Total	3,970

SECOND FLOOR
 8' FLAT CLG.



© COPYRIGHT 2022
 GROZA BUILDERS, INC

All dimensions and specifications are approximate and subject to change in the field. Rendering and floor plan are for illustrative purposes only and may not reflect the actual characteristics of the home. Please discuss options with your sales person.

511 SW Port St. Lucie Blvd.
 Port St. Lucie, FL 34953
 LIC# CGC1524734
 772-336-7653
 www.grozahomes.com

