

*Optional Key West elevation
*Optional Metal Roof



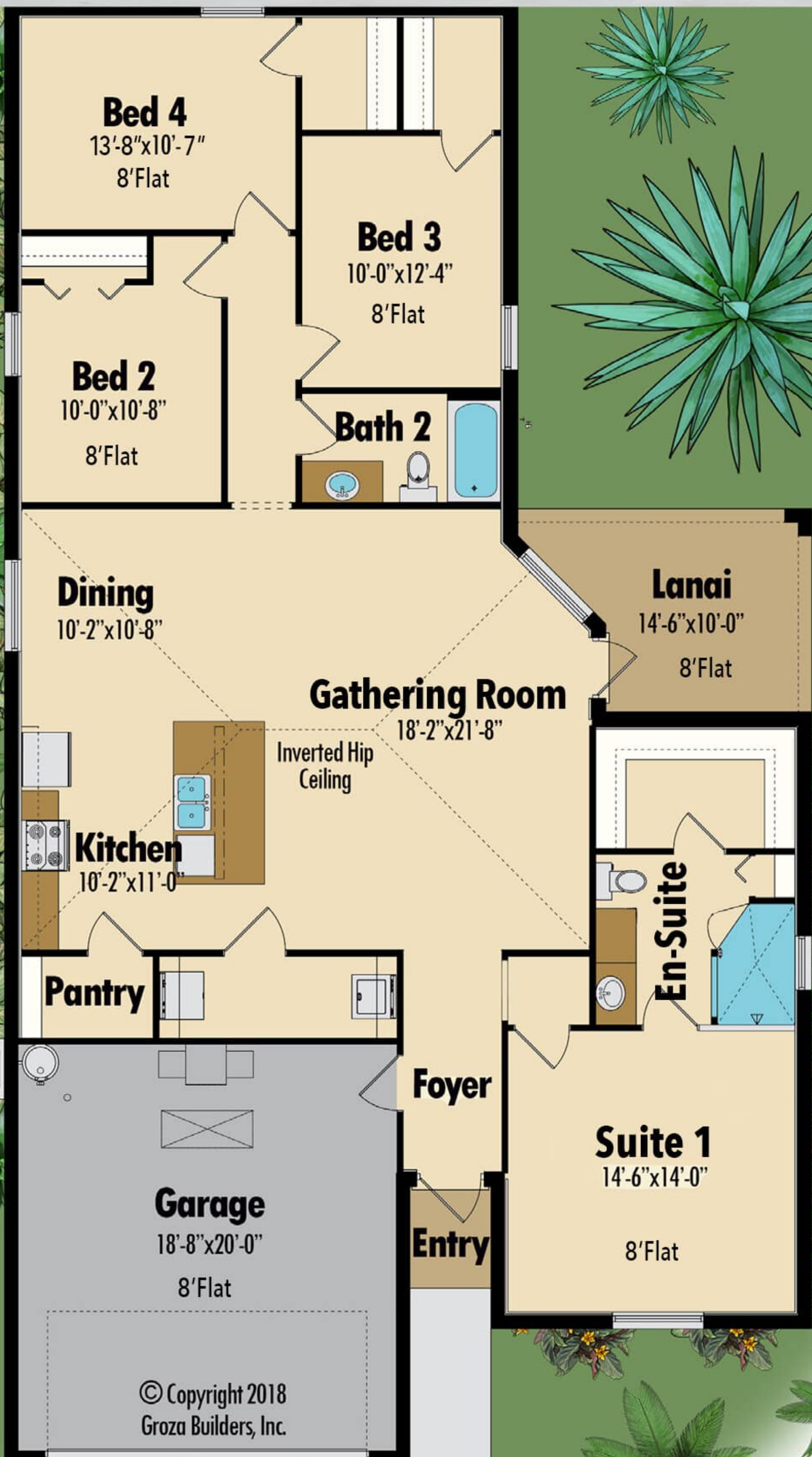
Buttonwood

Square Footage

Living	1,820
Garage	376
Lanai	117
Entry	20

Total 2333

All dimensions and specifications are approximate and subject to change in the field. Rendering and floor plan are for illustrative purposes only and may not reflect the actual characteristics of the actual home. Please discuss options with your salesperson.



511 SW Port St. Lucie Blvd
Port St. Lucie, FL 34953
Lic# CGC 1524734
(772) 336-7653
www.grozahomes.com