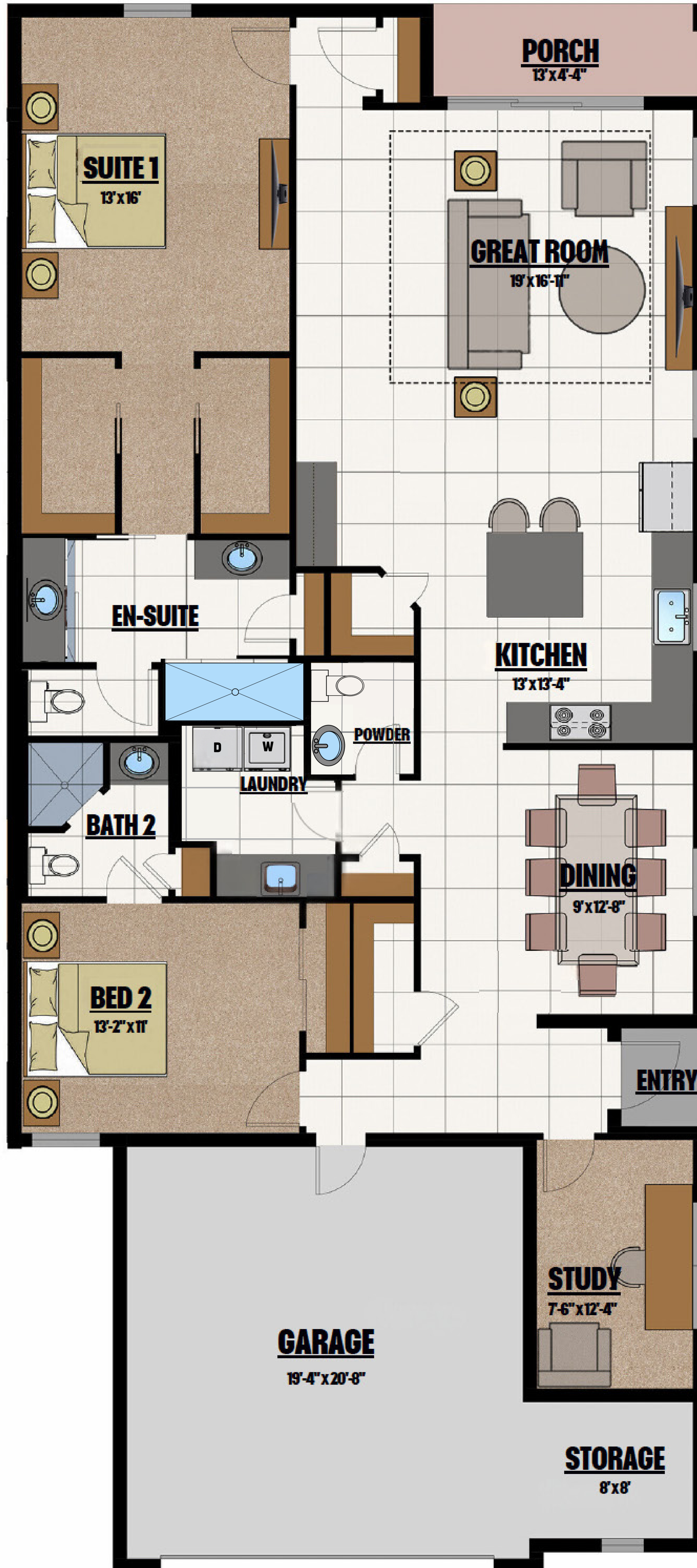


10' CEILINGS



## UNIT 99

### Square Footage

Living	1,842
Garage	476
Porch	56
Entry	19
<b>Total</b>	<b>2,393</b>

## UNIT 99

All dimensions and specifications are approximate and subject to change in the field. Rendering and floor plan are for illustrative purposes only and may not reflect the actual characteristics of the home. Please discuss options with your sales person.

511 SW Port St. Lucie Blvd.  
 Port St. Lucie, FL 34953  
 888-888-1524  
 36-7653  
[ahomes.com](http://ahomes.com)

