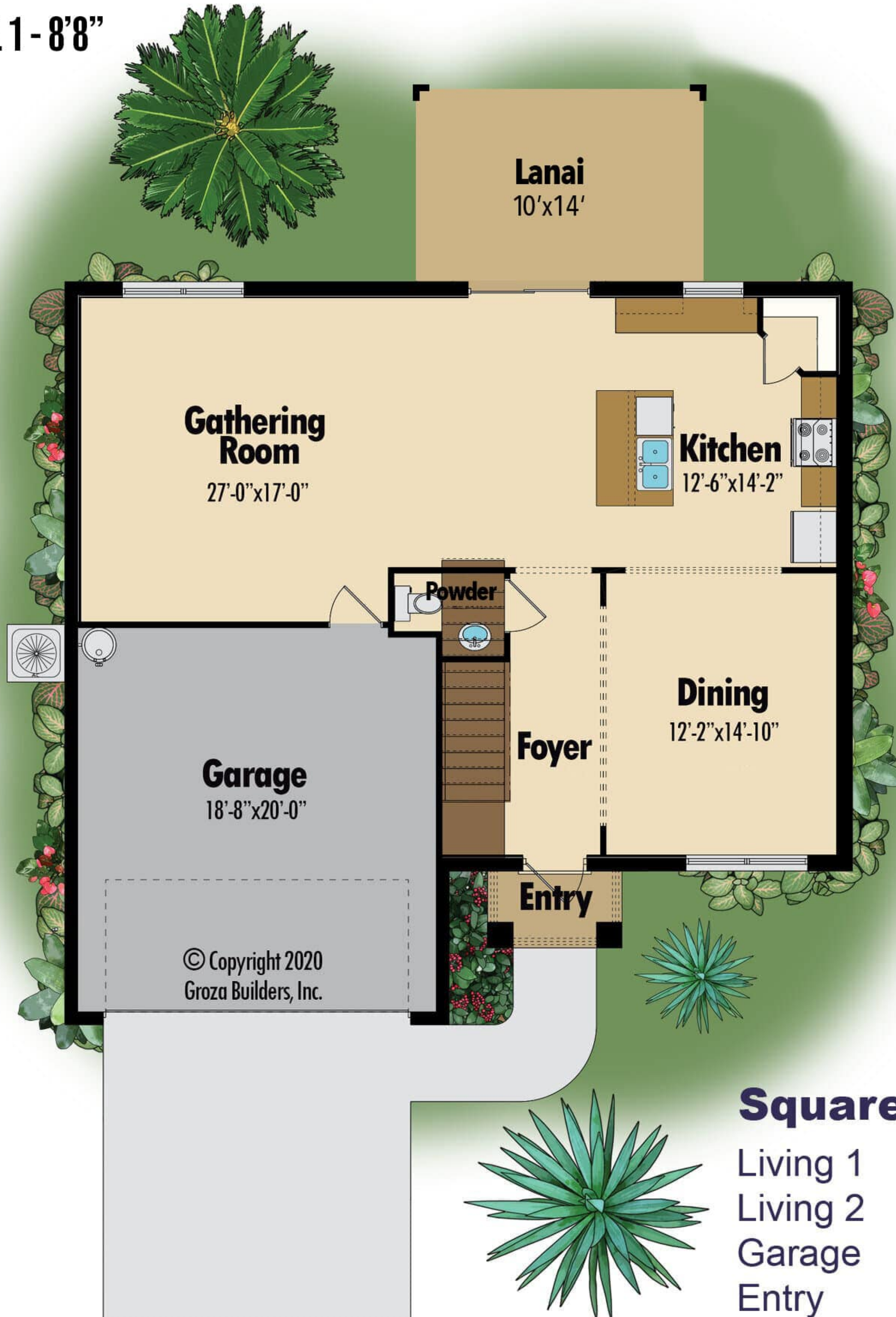




LEVEL 1 - 8'8"

LEVEL 2 - 8'

Azalea



Square Footage

Living 1	1,023
Living 2	1,337
Garage	394
Entry	36
Lanai	140
Total	2,930



511 SW Port St. Lucie Blvd
Port St. Lucie, FL 34953

Lic# CGC 1524734

(772) 336-7653

www.grozahomes.com

All dimensions and specifications are approximate and subject to change in the field. Rendering and floor plan are for illustrative purposes only and may not reflect the actual characteristics of the actual home. Please discuss options with your salesperson.